

*Energy
for life*



creativhandz™
energy solutions

For a sustainable future

About us.

At Creativ Handz, good craftsmanship is an integral part of our business. We are well known for creating long-term personal relationships, and it is this that gives us a family feel. With this in mind, we are able to turn any house into a home, in an earth friendly and environmentally sensitive manner.

Our Speciality

We specialise in the sale and installation of the following products;

- Water based underfloor heating
- Solar Water Heating
- Solar Power Solutions

- Electrical underfloor heating
- Insulation boards (to save electrical running costs)
- Energy efficient thermostat controllers.

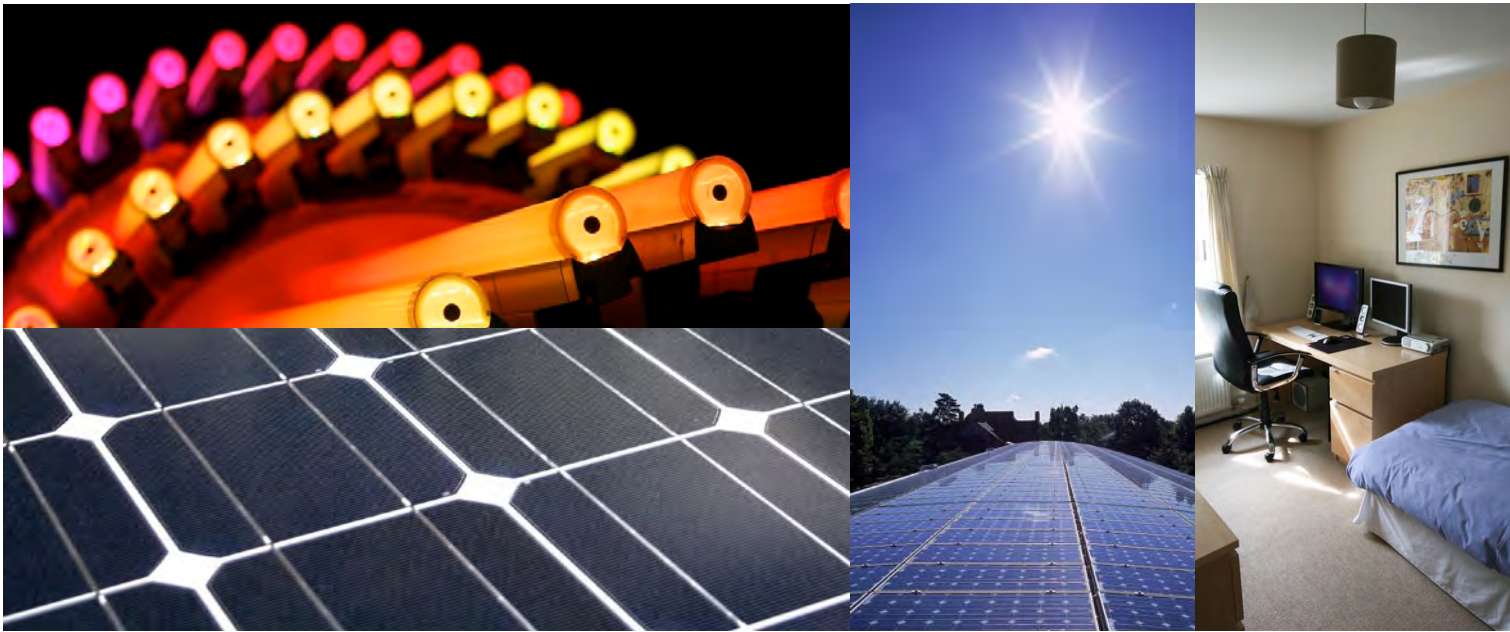
We promote and support the following brands;

- Warmup
- Marmox Insulation
- Bosch
- OJ Electronics
- SMA
- Solar Energy



Why choose us.

- We have been in operation since 2001 – meaning we use tried, tested and well established systems and staff.
- We employ several of our own teams of highly trained installation and repair technicians.
- In the event of floor heating faults through on site damage, we use our own fault tracing equipment to rectify the faults – resulting in quicker response times.
- We deliver on our commitments, and if we slip we'll rectify the situation – you will enjoy our honesty and integrity.
- Value for money - we'll negotiate and discuss pricing to make sure you understand the variety of options that are open to you.
- It's always a pleasure to serve our customers - you can expect personal attention, at all times.
- We value long term relationships and will not make any decisions based on short term solutions or profit, you will have peace of mind knowing we won't cut corners.
- We are never economical with the truth, you'll always know where you stand with us.
- We have a customised management system for project scheduling and progress reporting, known as "The Scheduler". We have developed a CRM database management system which we call Integr8, these systems allow us to ensure excellent customer service and satisfaction, repetitively. Rest assured that we don't forget about you once the job is done.
- We operate in the Gauteng region and surrounding areas.
- Our employees are covered by workman's compensation assurance, (WCA/COID). We have a variety of insurance policies in place, such as, public liability insurance, product liability insurance, pollution liability cover and defective workmanship cover. Our client's properties will be looked after, and should something out of our control take place, they can rest assured that their assets are covered.
- We give our customers a specific user manual for reference purposes on completion of each project. Making it much easier to understand and use the heating system.



Our expertise

Water based Floor Heating: (Solar or Conventional)

- Using heat pumps as a primary source, hot water is pumped through polyethylene pipes in the floor, at approx 40°C.
- Greater savings in energy consumption are achieved by using solar heating as a primary heat source, with a heat pump or gas unit as a backup.
- They are shielded devices for safe, energy efficient use, with no EMF (Electromagnetic field) interference or noise.
- Thermostat controllers monitor the temperature providing more flexibility, and results in more efficient energy usage.

Solar Water Heating

- Efficient Hot Water Technology - Solar hot water pays for itself! You save from the very first day, so the system pays for itself in no time at all. The sun foots the bill.
- Combination systems for water based floor heating and domestic water heating, or stand alone domestic water heating solutions.
- Finest quality European manufactured components to provide reliability and technical innovation.

Solar Power Solutions

- Produce your own electricity from the sun – from small systems to total off grid solutions, we have the expertise to cover the full spectrum.
- Power management systems to help regulate peak power demand.
- LED lighting uses 60-80% less electricity when compared to CFL (compact fluorescent) lights and last up to 10x longer.
- Add on wind turbine technology to complement our solar solutions.

Electrical underfloor heating

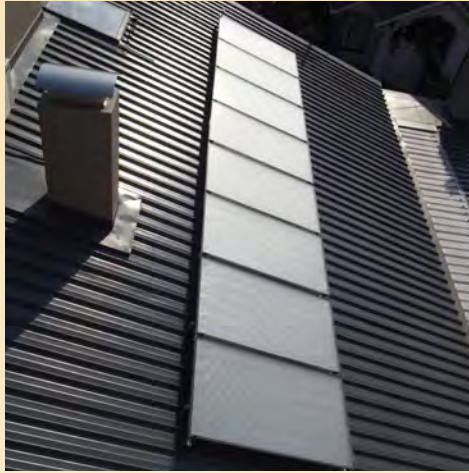
- Electrical floor heating is more economical than conventional heating systems.
- **Undertile heating** - Is approximately 2mm thick, and floor levels are not altered. Installation complies with SANS10142-1:2006 Amendment 7 - all cables in wet areas are earth shielded.
- **Under Carpet Heating:** Is installed in new or existing environments. Wafer thin pads are laid between underlay and the carpet.
- With a tough earth shield for your protection.
- **Under Laminate Heaters:** Use less power, and are installed with a floor sensor to restrict the temperature to 27°C (as specified by laminate manufacturers)

Energy Efficient Thermostats:

- Elegant manual or digitally programmable thermostats
- Easy to use & mounted on a variety of electrical plates to suit your decor

Insulation for floors

- Insulation boards save electrical running costs.
- Surface insulation – by using a 10mm insulation backing board, energy savings of up to 50% can be achieved. Laid like a tile with adhesive with electrical floor heating installed above the insulation, followed by your floor covering.
- In screed insulation – 30mm R-value =1 insulation is installed under your slab and complies with SANS 10400-XA for water based and electrical floor heating.



No 1 13th Street
Albertskroon
Johannesburg

Private Bag X1
PostNet Suite 59
Northcliff 2115

Tel: 0861 927 684
Fax: 0866 937 353

Web: www.creativhandz.co.za

Email: info@creativhandz.co.za




creativhandz™
energy solutions

For a sustainable future



BOSCH
Invented for life